

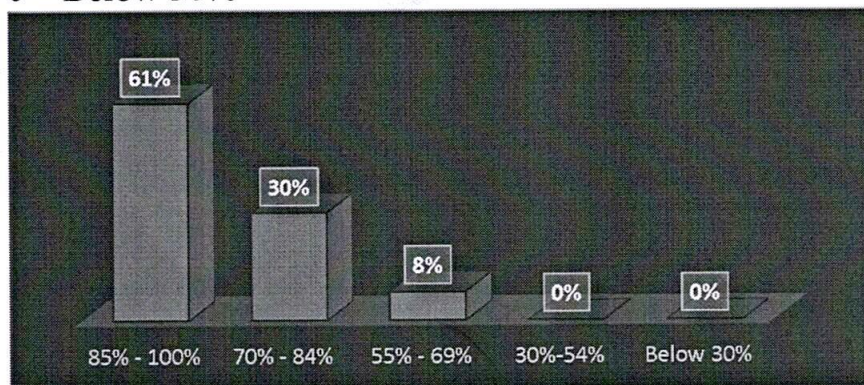


Results of student satisfaction survey 2021-22

Total number of respondents – 65

Q.1. much of the syllabus was covered in the class?

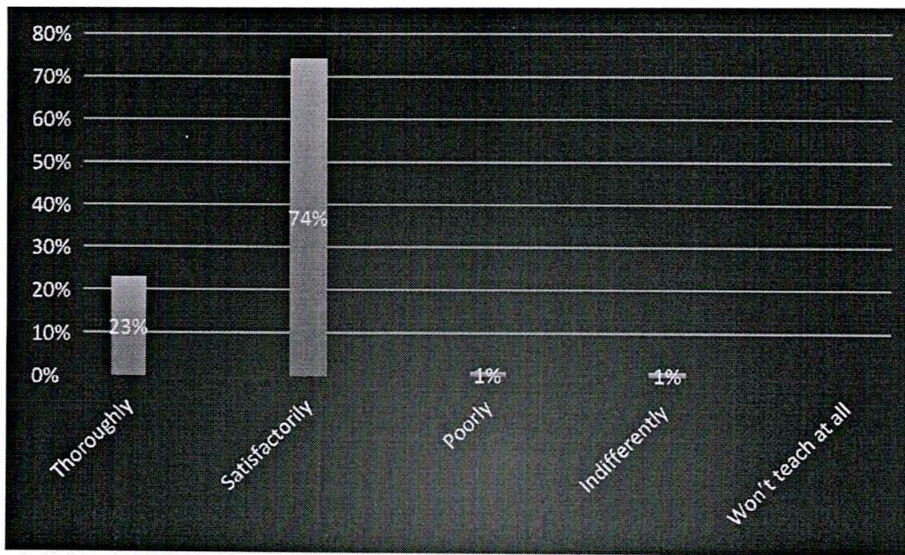
- 4 – 85 to 100%
- 3 – 70 to 84%
- 2 – 55 to 69%
- 1– 30 to 54%
- 0 – Below 30%



Q.2. How well did the teachers prepare for the classes?

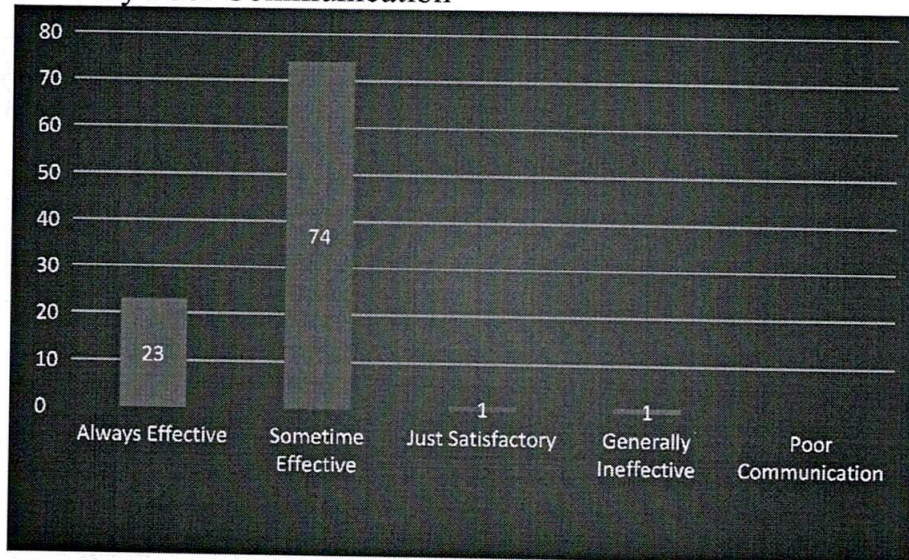
- 4 –Thoroughly
- 3 – Satisfactorily
- 2 – Poorly
- 1 – Indifferently
- 0 – Won't teach at all





Q.3. How well were the teachers able to communicate?

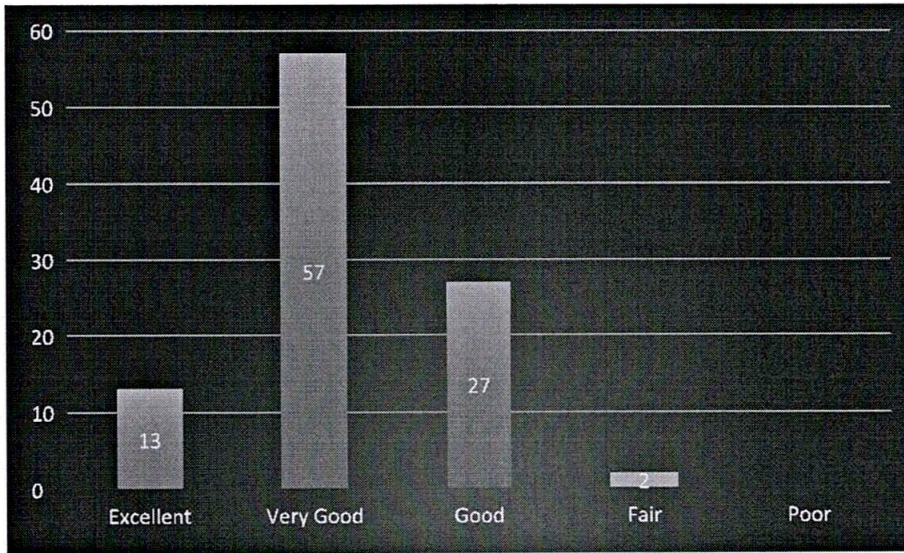
- 4 – Always Effective
- 3 – Sometimes Effective
- 2 – Just Satisfactorily
- 1 – Generally Ineffective
- 0 – Very Poor Communication



Q.4 The teacher's approach to teaching can best be described as:

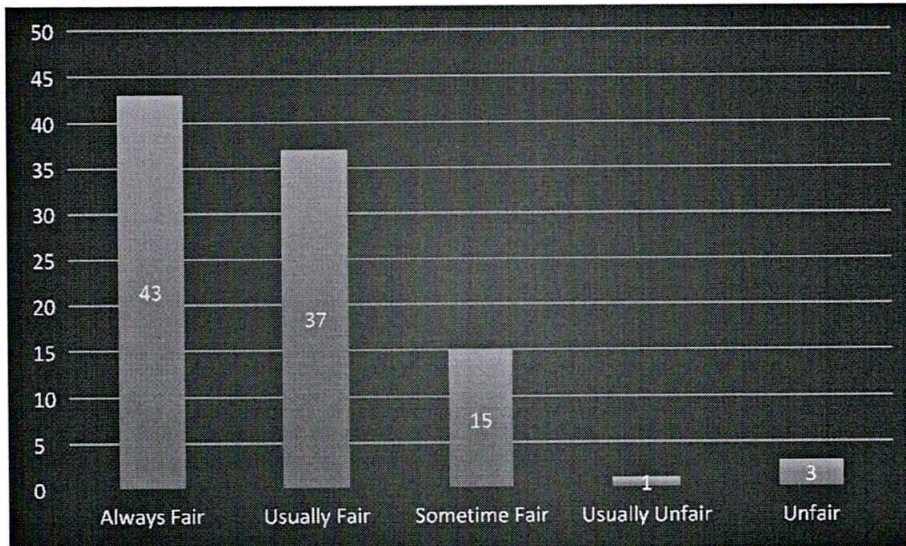
- 4 – Excellent
- 3 – Very Good
- 2 – Good
- 1 – Fair
- 0 – Poor





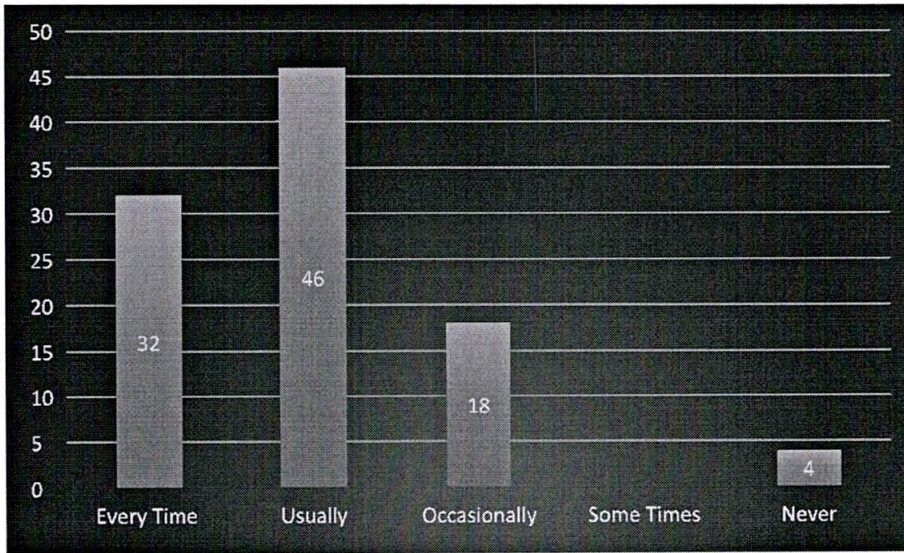
Q.5. Fairness of the internal Evaluation process by the teacher:
 4 – Always Fair
 3 – Usually Fair
 2 –

Sometimes Unfair
 1 – Usually Unfair
 0 - Unfair



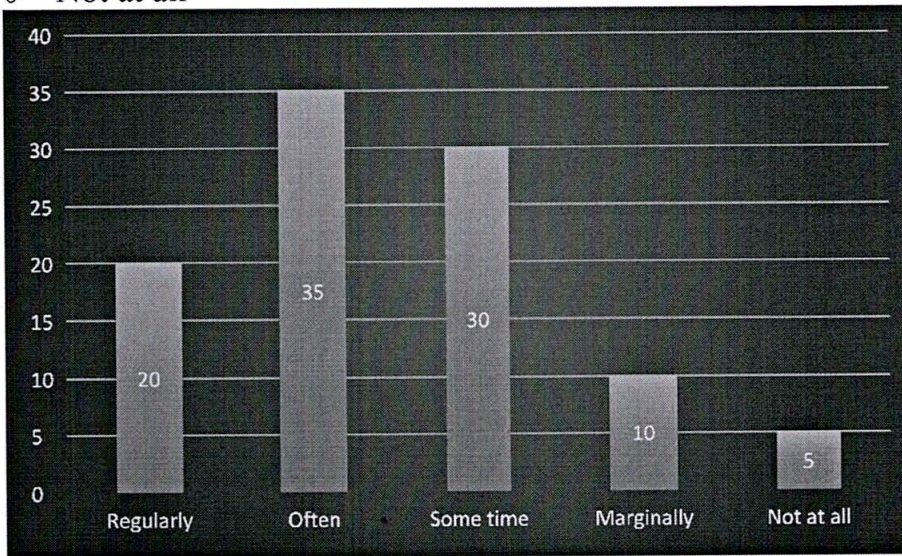
Q.6 Was your Performance in assignment discuss with you?
 4 – Every Time
 3 – Usually
 2 – Occasionally
 1 – Sometimes
 0 – Never





Q.7. The institute takes active interest promoting internship, student exchange, field visit opportunities for students.

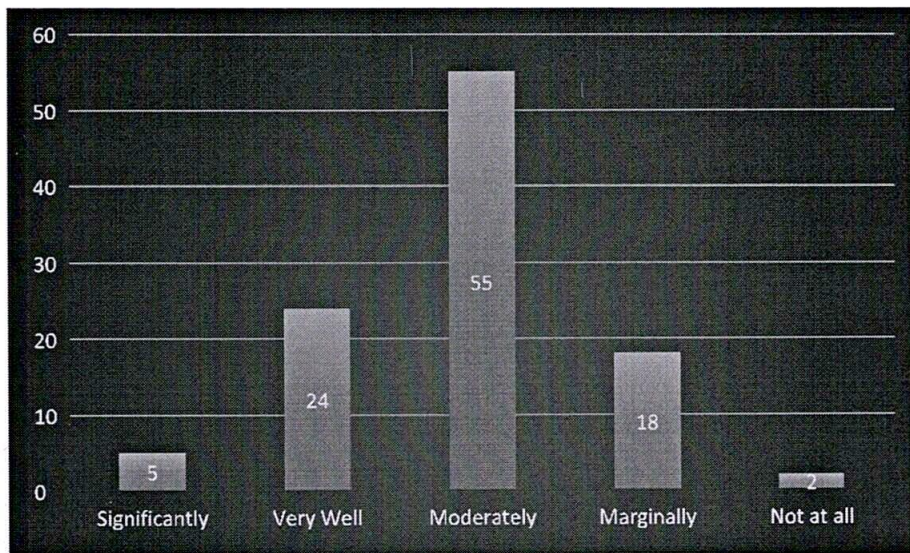
- 4 – Regularly
- 3 – Often
- 2 – Sometimes
- 1 – Marginally
- 0 – Not at all



Q.8. The teaching and mentoring process in your institutinn facilitating you in cognitive, social, and emotional growth.

- 4 – Significantly
- 3 – Very Well
- 2 – Moderately
- 1 – Marginally
- 0 – Not At All





Q. 9. The Institute provides multiple opportunities to learn and grow.

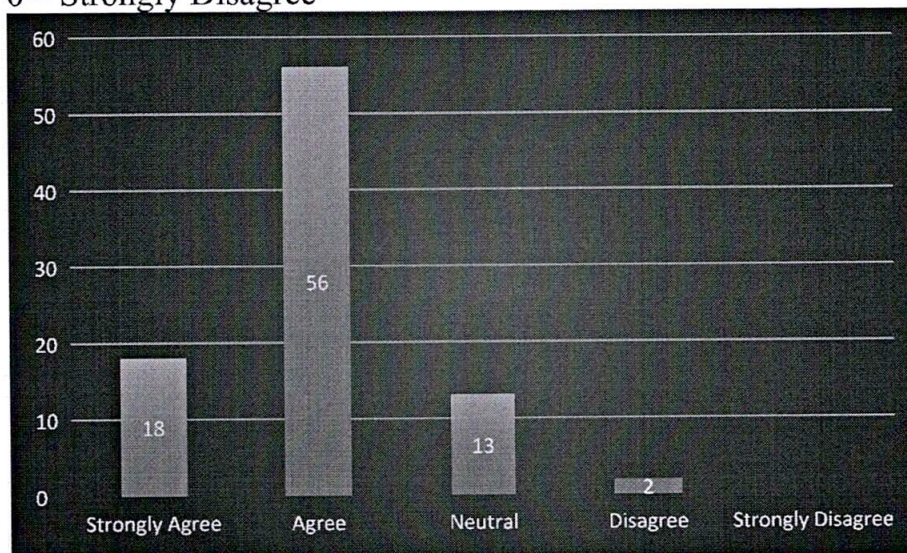
4 – Strongly Agree

3 – Agree

2 – Neutral

1 – Disagree

0 – Strongly Disagree



Q. 10. Teachers inform you about your expected competencies, course outcomes, and program outcomes.

4 – Every Time

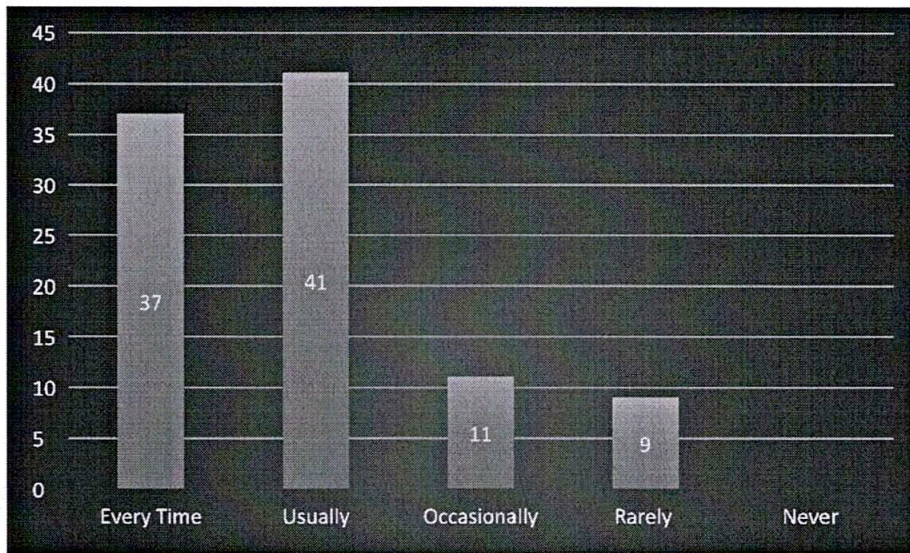
3- Usually

2 – Occasionally/Sometimes

1 – Rarely

0 – Never





Q.11. Your mentor does a necessary follow-up with an assigned task to you.

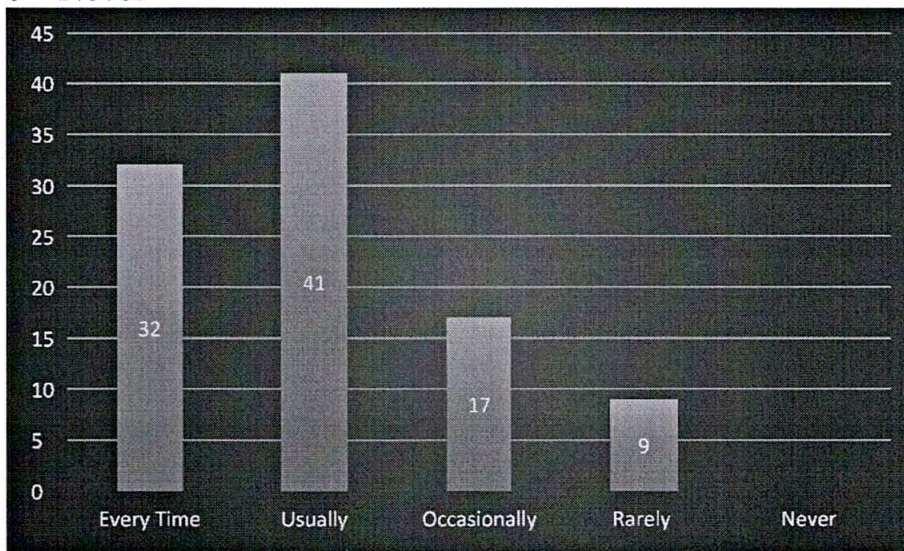
4 – Every Time

3- Usually

2 – Occasionally/Sometimes

1 – Rarely

0 – Never



Q.12. The teachers illustrates the concept through examples and applications.

4 – Every Time

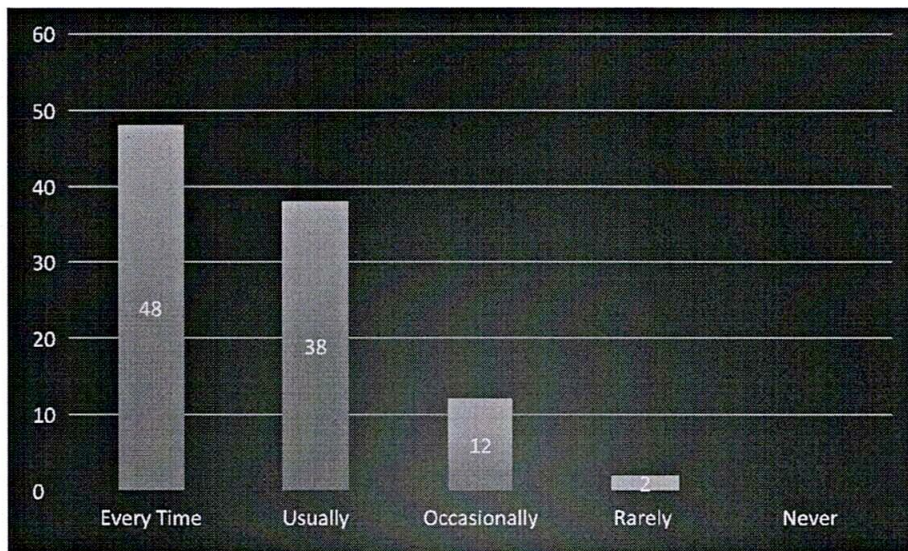
3- Usually

2 – Occasionally/Sometimes

1 – Rarely

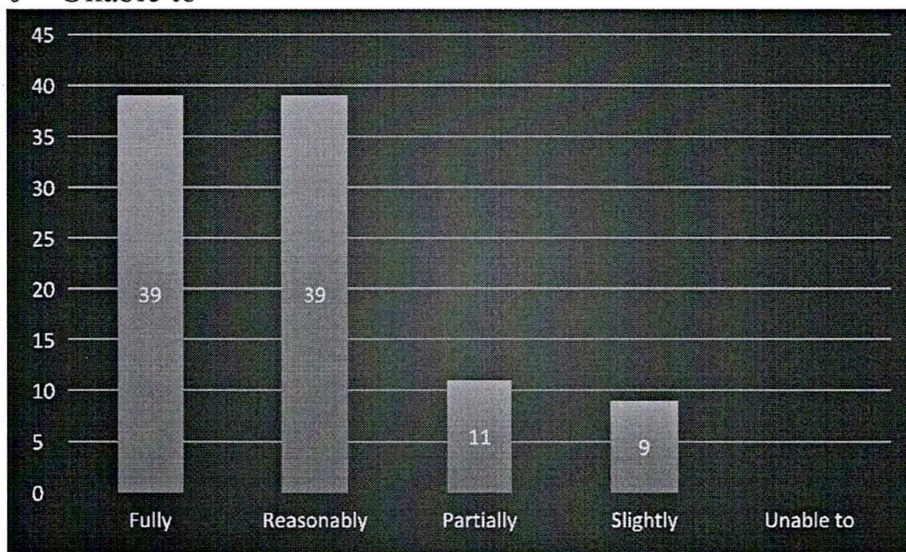
0 – Never





Q.13. The teachers identify your strengths and encourage you with providing right level of challenges.

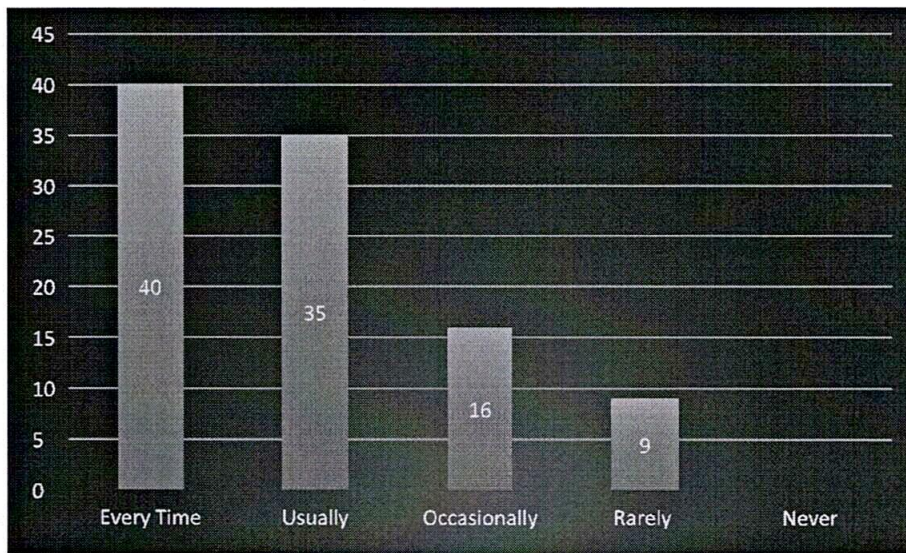
- 4 – Fully
- 3 – Reasonably
- 2 – Partially
- 1- Slightly
- 0 – Unable to



Q.14. Teachers are able to identify your weakness and help you to overcome them.

- 4 – Every Time
- 3- Usually
- 2 – Occasionally/Sometimes
- 1 – Rarely
- 0 – Never





Q. 15. The institute makes an effort to engage students in the monitoring, review, and continuous quality improvement of the teaching-learning process.

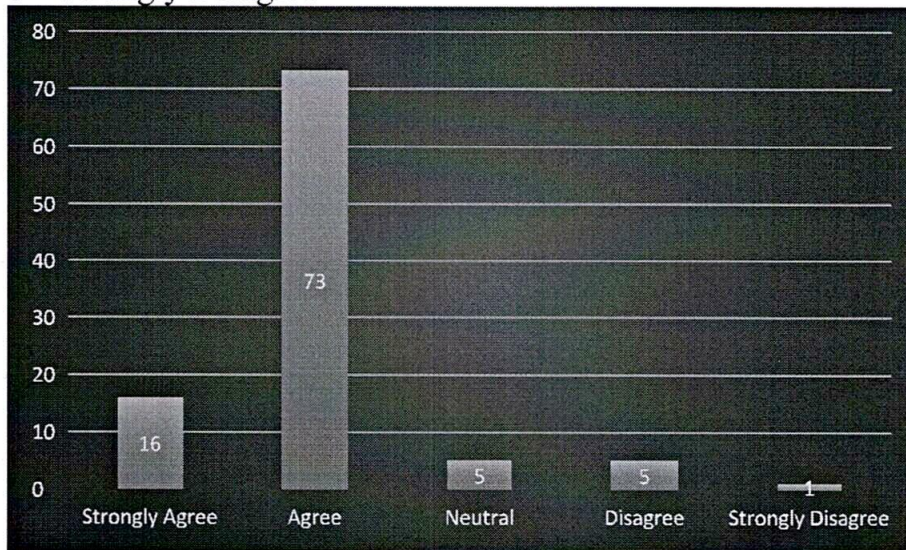
4 – Strongly Agree

3 – Agree

2 – Neutral

1 – Disagree

0 – Strongly Disagree



Q. 16. The institute / teachers use student centric methods, such as experimental learning, participative learning and problem solving methodologies for enriching learning experiences.

4 – To a great extent

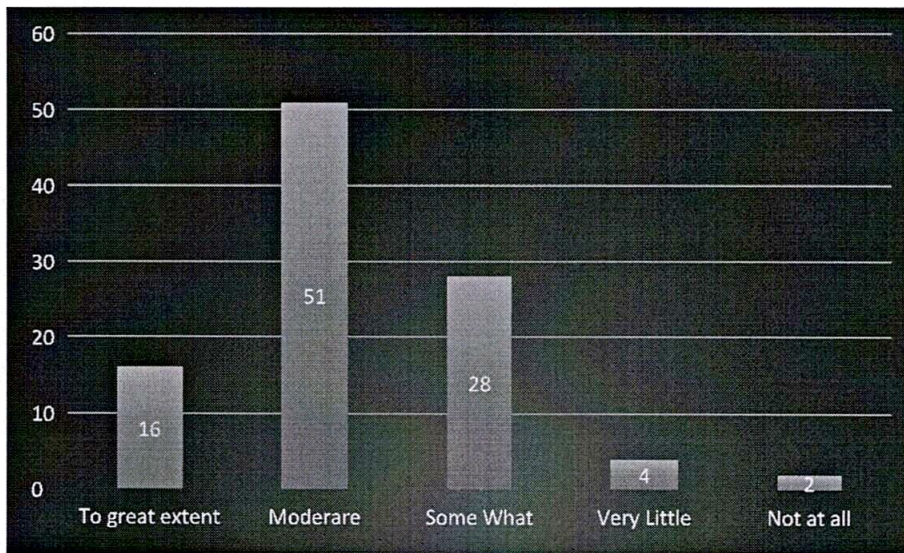
3 – Moderate

2 – Some what

1 – Very little

0 – Not at all





Q.17. Teachers encourage you to participate in extracurricular activities.

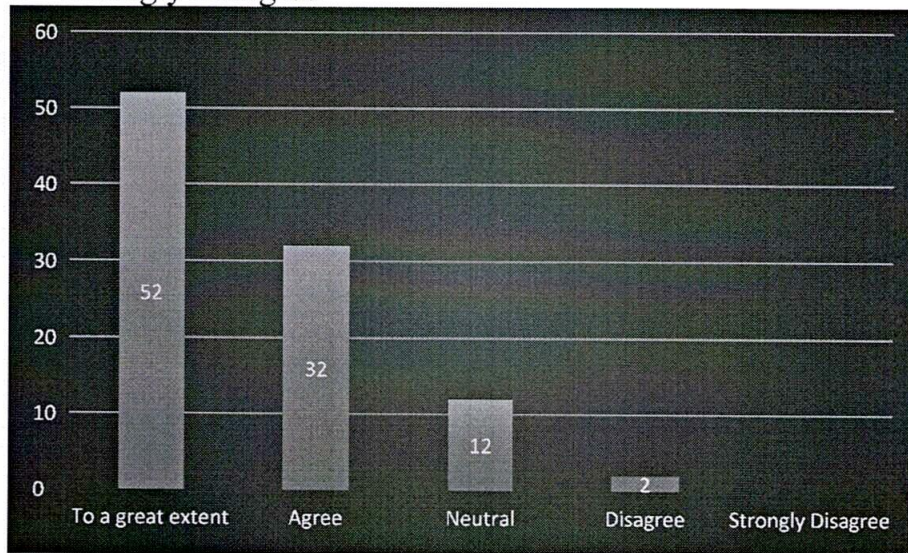
4 – To a great extent

3 – Agree

2 – Neutral

1 – Disagree

0 – Strongly Disagree



Q.18. Efforts are made by the institute/teacher to inculcate soft skills, life skills, and employability skills to make you ready for the world of the work.

4 – To a great extent

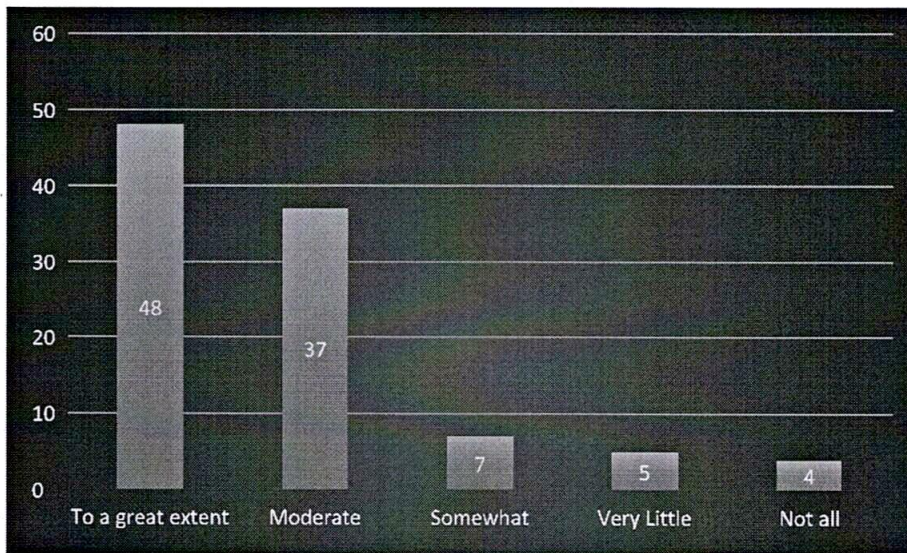
3 – Moderate

2 – Somewhat

1 – Very Little

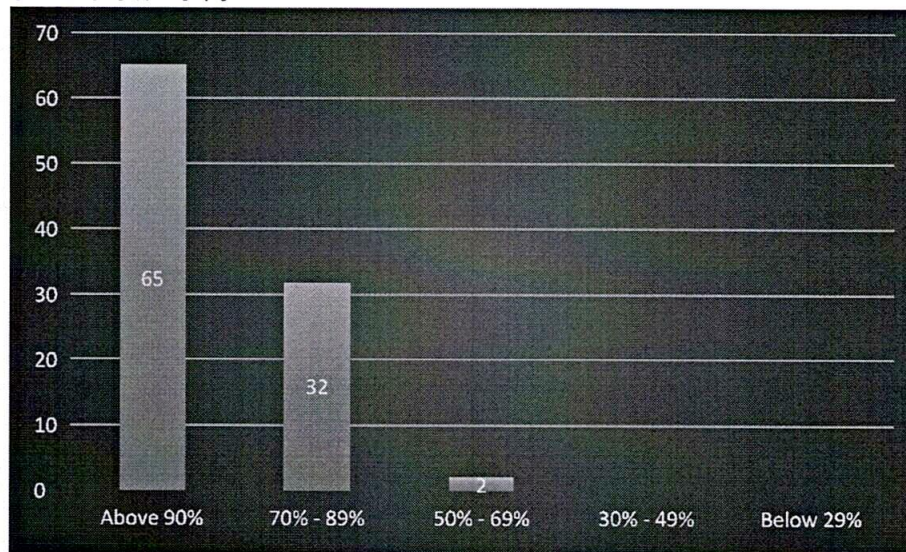
0 – Not at all





Q.19. What percentage of teachers use ICT tools such as LCD projector, Multimedia, etc. while teaching.

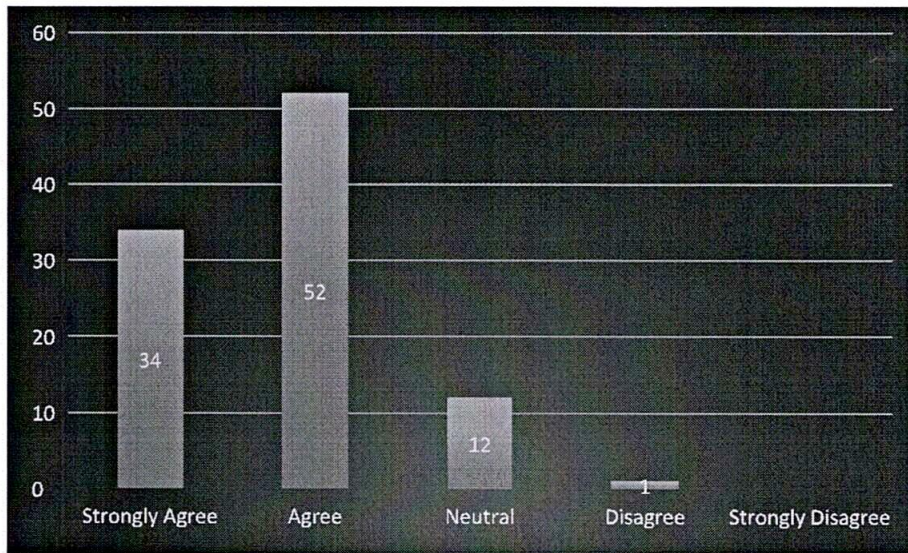
- 4 – Above 90%
- 3 – 70 – 89%
- 2 – 50 – 69%
- 1 – 30 – 49%
- 0 – Below 29%



Q.20. The overall quality of teaching – learning process in your institute is very good.

- 4 – Strongly Agree
- 3 – Agree
- 2 – Neutral
- 1 – Disagree
- 0 – Strongly disagree





21. Give three observations/suggestions to improve the overall teaching–learning experience in your institution.

- More Industrial Visit
- Experiential Learning through practical approach
- More Placement opportunities
- Internship support
- More games to be conducted

Principal
XITE College

